

The Multipurpose Logistic Platform in the Heart of Europe



ANTWERP EUROTERMINAL NV



Welcome to
Antwerp Euroterminal



GRIMALDI GROUP



GRIMALDI GROUP

The Grimaldi Group in figures

- 120 vessels owned and managed: ro/ro, pure car & truck carriers, ro/pax & cruise ferries
- 130 ports served in 47 countries
- 20 terminals in Europe & West Africa
- Number of employees: 15,000 persons (including crews)
- Routes served:
 - North Europe-Med
 - North Europe-West Africa
 - North Europe- South America
 - North Europe-North America
 - North-America-West Africa
 - Med-West Africa
 - MoS in the Baltic & North Sea and in the Med
- The 1st short sea ro/ro operator, the 1st ro/pax operator for linear meters
- The 5th vehicle carrier operator, the 25th for container transport





GRIMALDI GROUP

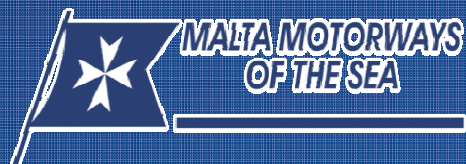
Group Overview

Shipping Companies



Grimaldi Group S.p.A.

MMOS



Grimaldi Euromed S.p.A.

Grimaldi Deep Sea S.p.A.

ACL



Finnlines

HansaLink

NordoLink

FinnLink

Trans Russia Express



Minoan





GRIMALDI GROUP

Group Overview – Vertical Growth

20 car/cntrs terminals
(Total sqm 6 million)

AET (Antwerp)
UNIKAI (Hamburg)
Porto di Wallhamn
PTML (Lagos)
SAT (Salerno)
CETAL (Monfalcone)
CTE (Civitavecchia)
PET (Palermo)
VTE (Valencia)
Finnsteve (Finland) 3
EMIL (Cork)
SAL (Esbjerg)
Alexandria Terminal



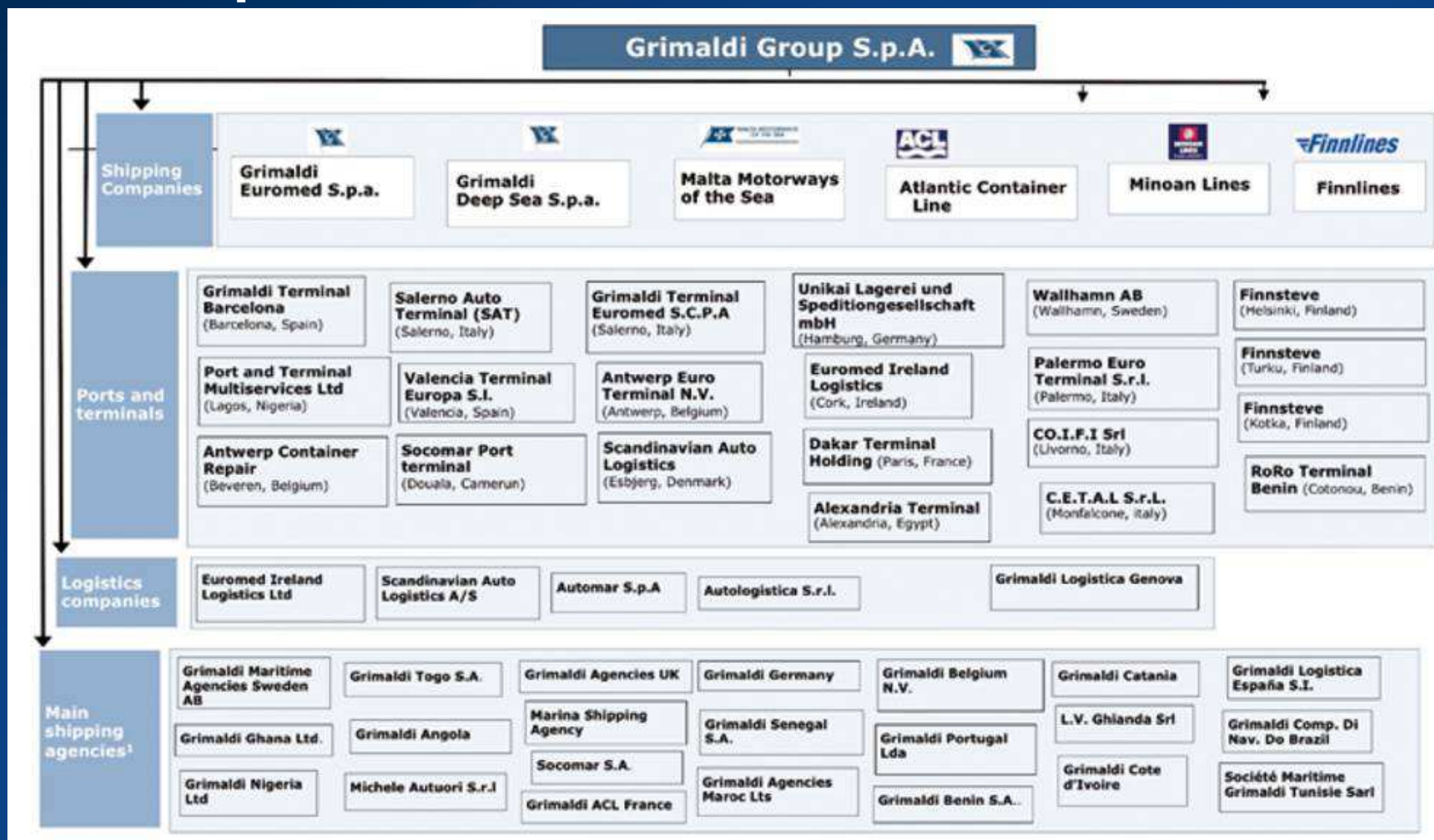
4 Owned Logistics Companies

Automar (Italy)
ACL (USA)
EMIL (Ireland)
SAL (Denmark)



GRIMALDI GROUP

Group Overview – Vertical Growth



The Multipurpose Logistic Platform in the Heart of Europe

The Center of Grimaldi Group Network



ANTWERP EUROTERMINAL NV



The Multipurpose Logistic Platform in the Heart of Europe

AET – Terminal Development – Key Steps



ANTWERP EUROTERMINAL NV

Year	Milestones	M ²	Birth (m)	Fase
2001	AET is born Starting of with the EuroMed Service	200.000	600	Fase 1
2001	Door to door concept starts in Benelux, Small PDI centre is build to			
2003	The Grimaldi DeepSea trade calls AET	650.000	1.000	Fase 2
2005	Due to volume growth further storage space growth			
2005	Building of new PDI Centre (7500 M ²)			
2005	Building of our office building			
2005	Building of 2 semi covered warehouses (16,000m ²)	800.000	1.700	Fase 3a
2006	Due to volume growth further storage space growth	972.000	1.700	Fase 3b
2008	The first Container repair shop is build			
2010	Finnlines starts to call AET - New jetty.	982.000	1.700	
2012	New tropical wood area next the warehouses	992.000	1.700	
2013	a 2nd Container Repair shop is build			
2014	New tropical wood area behind the warehouses	1.010.000	1.700	
2014	Antwerp Lashing and Security is a fact.			
2015	Due to volume growth further storage space growth	1.090.000	1.700	Fase 4a
2016	Rail track Gantry 620m			
2016	2 Gantry Cranes			
2016	New extension to accommodate ACL	1.320.000		Fase 5a
2017	Extend of storage area	1.490.000	2.180	Fase 5b



The Multipurpose Logistic Platform in the Heart of Europe

Terminal characteristics



ANTWERP EUROTHERMAL NV

- Surface
 - 1.500.000 m²
 - Quayside:
 - Length 2.450 meter
 - Accommodated for side, quarter & stern ramp vessels
 - Depth (Draft) : 16 meter
 - Direct access to road network
 - Direct access to rail network
- Total 4.700 m of rail track

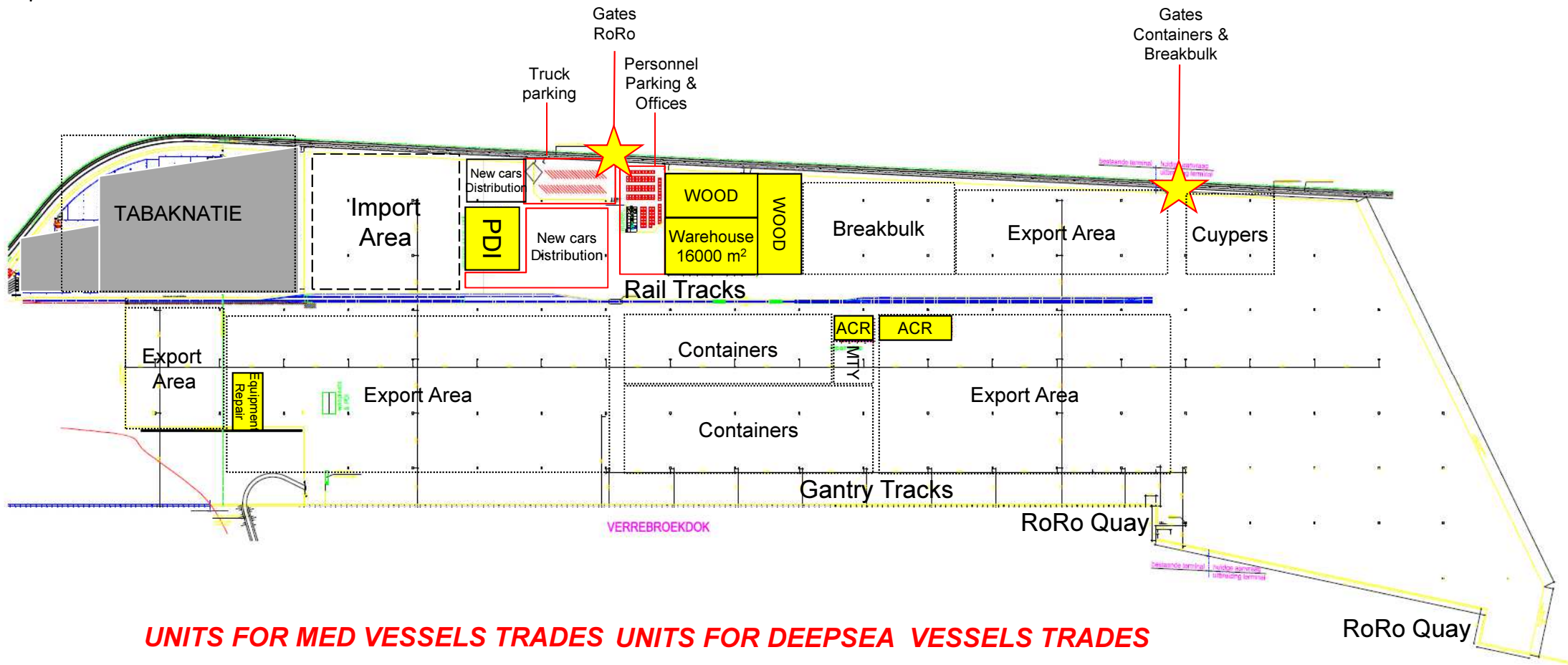


The Multipurpose Logistic Platform in the Heart of Europe

Terminal lay-out



ANTWERP EUROTHERMAL NV



The Multipurpose Logistic Platform in the Heart of Europe

Terminal Equipment



ANTWERP EUROTHERMAL NV

- 2 x harbour mobile crane
 - 1 of 144 tons capacity;
 - 1 of 100 tons capacity;
 - 208tons capacity in tandem:
- 12 x TugMasters
- 8 x Reach stackers
- 19 x forklifts
- 25 x Tow jeeps
- 2 x Gantry Crane on tracks
 - 70 tons capacity
 - 620 m track length



The Multipurpose Logistic Platform in the Heart of Europe

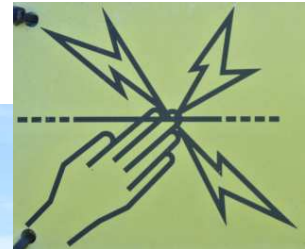
Security



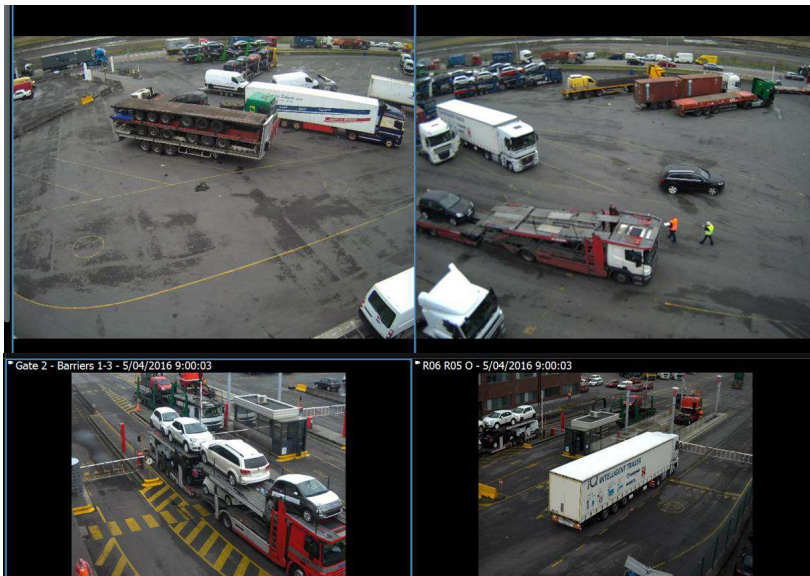
ANTWERP EUROTHERMAL NV

- ISPS certified
- 2 GATES - IN/OUT
- Guards 24/24
- CCTV - 240 camera's

➤ Fencing



- 90 cm concrete jersey
- 2 Mtr fencing
- 40 cm electric wire barricade



The Multipurpose Logistic Platform in the Heart of Europe Services



ANTWERP EUROTHERMAL NV

Stevedoring

CFS

Terminal

VPC

Ro-ro/Lo-lo

16.000 m² covered storage
stuffing

Load/discharge trains, barges

7500 m² workshop

Vehicles
containers

stripping

Lotformation

DEWAX - Carwash

Breakbulk

Vehicle damage inspection

Pre-Delivery Inspection

Mafi/projects cargo

Measuring

MAPO preparation

Heavy Lifts

Tally

Repair/Bodywork / Paintjob

Planmaking

conversion

Storage

Accessory/Interior fitting



The Multipurpose Logistic Platform in the Heart of Europe

Terminal Intermodal



ANTWERP EUROTHERMAL NV

- We handle all types of rolling cargo, mafi & Containers, Heavy and project Cargo.
- With the combination of all our possible services and our different connections to transport means we can unlock all intermodal opportunities.

➤ Land Connection :

- By Road
- By Rail

➤ Water Connection :

- Sea going vessel – with different lines calling unlocking the major part of the world
- Coasters
- Barges



The Multipurpose Logistic Platform in the Heart of Europe

Heavy Lifts



ANTWERP EUROTERMINAL NV

- Heavy lift capability (up to 208 tons)



The Multipurpose Logistic Platform in the Heart of Europe

CFS



ANTWERP EUROTHERMAL NV

- On site facilities for stuffing and stripping of MAFI & Containers



The Multipurpose Logistic Platform in the Heart of Europe

Over 150 Different OEMs



ANTWERP EUROTHERMAL NV



CLAAS



LIEBHERR

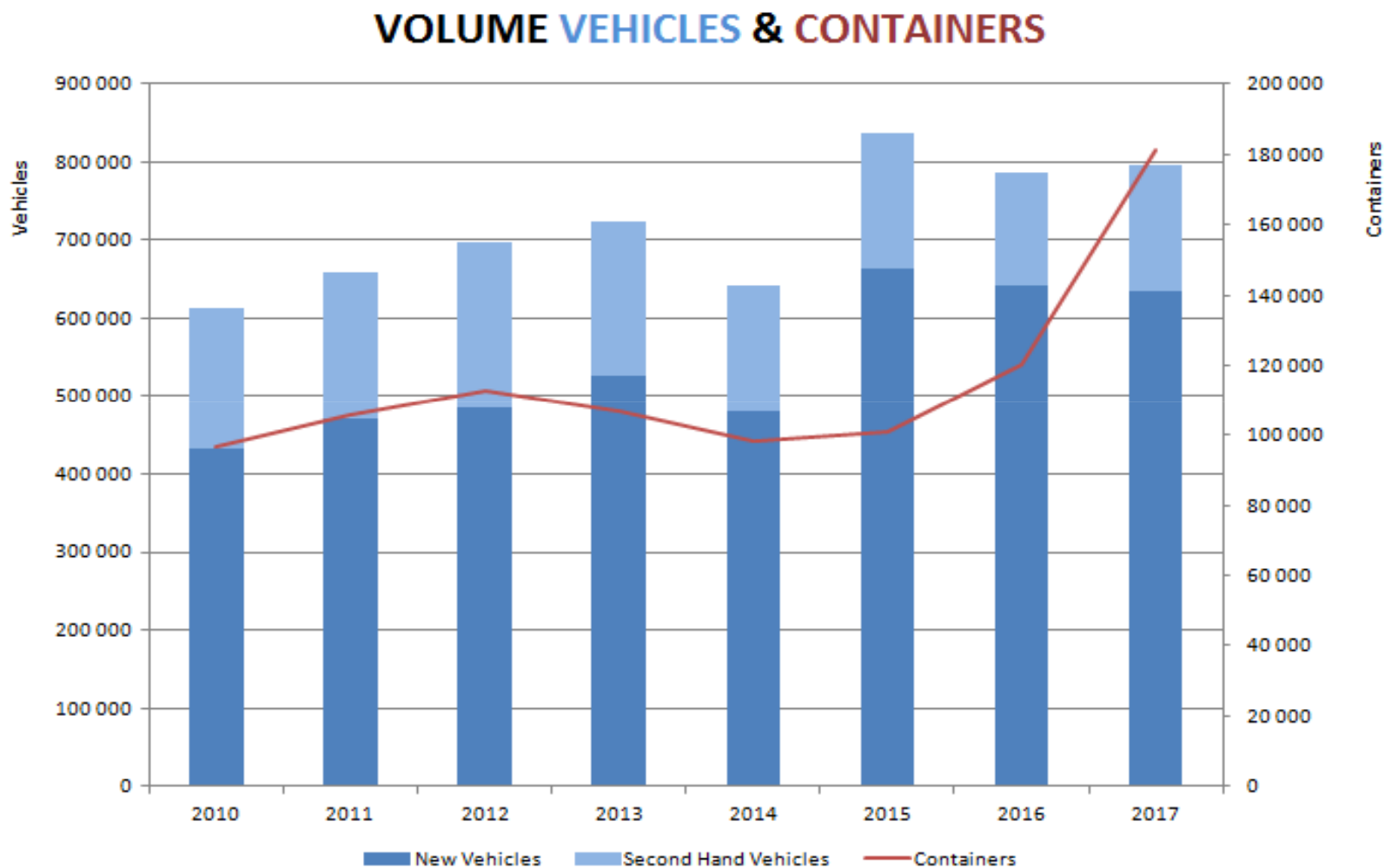
GRIMALDI GROUP

The Multipurpose Logistic Platform in the Heart of Europe

Volumes handled



ANTWERP EUROTHERMAL NV



The Multipurpose Logistic Platform in the Heart of Europe

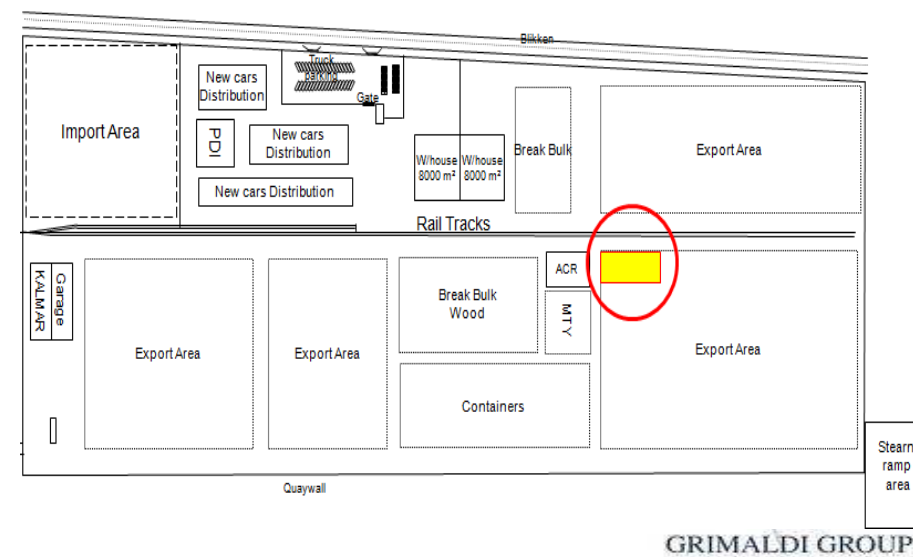
Container / Mafi Repair



ANTWERP EUROTERMINAL NV

ACR *Antwerp Container Repair*

- On site workshop 2.500sqm + 2.700 sqm
- Cleaning & repair of
 - Containers
 - Mafi
 - Reefers



The Multipurpose Logistic Platform in the Heart of Europe

2nd lock for leftbank – mid 2016



ANTWERP EUROTERMINAL NV



The Multipurpose Logistic Platform in the Heart of Europe

Investments & Projects



ANTWERP EUROTERMINAL NV

➤ 2015 :

- 8 Ha Pavement;
- 42 New cameras

➤ 2016 :

- 2 New Gantry Cranes
- 22 Ha Pavement
-  AEO certified
- 630 meter Rail Tracks for Gantry Cranes;

Total investment 2015-2016 : > €40.000.000

The Multipurpose Logistic Platform in the Heart of Europe



ANTWERP EUROTERMINAL NV

Antwerp Euroterminal



THANK YOU FOR YOUR ATTENTION